



85% organic cotton/15% post-consumer recycled polyester Ringspun combed cotton Unisex Straight fit 3-ply brushed fleece Metal zip 1/2 circle in the back 2 kangaroo pockets 1x1 rib bottom hem and cuffs Double over stitching on cuffs, armholes, bottom hem Lined hood in main material with drawstring tie-off Round drawstring with recycled metal tips and eyelets Inner taped neck with herringbone

350 g/m²

Sizes

XXS - XS - S - M - L - XL - XXL - 3XL - 4XL

More information

Logistic

5 20

Country of origin

BD - Bangladesh

Customs code

61102099

Washing instructions

Colours

Certifications

Made with 85% Organic materials
Certified by Ecocert Greenlife.
EGL N°183963 / TOPTEX Belgique

Made with 85% Organic materials
Certified by Ecocert Greenlife.
EGL N°183960 / TOPTEX France

Made with 85% Organic materials
Certified by Ecocert Greenlife.
EGL N°185651 / NATIVE SPIRIT

LSF

ORGANIC COTTON

POST CONSUMER RECYCLED POLYESTER

♻️

4 COLOURS

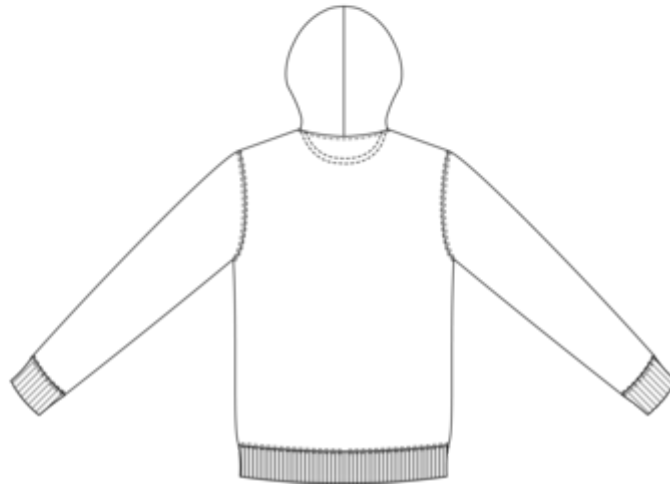
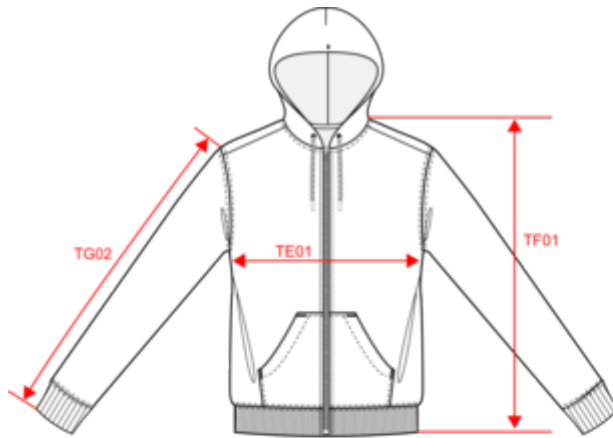
ENZYME WASH

OEKO-TEX®
CONFIDENCE IN TEXTILES
STANDARD 100
CQ 10077/RTM
Textil substances free.
www.oeko-tex.com/standard100

NS402

Unisex zip-up hooded sweatshirt - 350gsm

Dimensions (cm)



| Measurements in cm | XXS | XS | S | M | L | XL | XXL | 3XL | 4XL |
|---|-------|-------|-------|-------|-------|-------|-------|-------|-------|
| TE01 - 1/2 chest width at 1.5cm below armhole | 46.00 | 49.00 | 52.00 | 55.00 | 58.00 | 61.00 | 64.00 | 67.00 | 70.00 |
| TF01 - Total height from HSP | 65.50 | 67.50 | 69.50 | 71.50 | 73.50 | 75.50 | 77.50 | 79.50 | 81.50 |
| TG02 - Long sleeve length | 61.50 | 62.50 | 63.50 | 64.50 | 65.50 | 66.50 | 67.50 | 68.50 | 69.50 |

NS402

Unisex zip-up hooded sweatshirt - 350gsm

Colours information



Black
 RVB : 35,35,37
 Pantone C : Black
 Pantone TCX : 19-4004TCX



Iron Grey
 RVB : 78,80,82
 Pantone C : 446C
 Pantone TCX : 19-3901TCX



Light Olive Green
 RVB : 120,112,89
 Pantone C : 7497C
 Pantone TCX : 17-0517TCX



Navy Blue
 RVB : 41,45,57
 Pantone C : 433C
 Pantone TCX : 19-4010TCX

Logistic



5



20

| Sizes | Width (cm) | Height (cm) | Length (cm) | Net weight (kg) | Gross weight (kg) | Pieces/Box | Pieces/Bundle |
|-------|------------|-------------|-------------|-----------------|-------------------|------------|---------------|
| XXS | 40.00 | 38.00 | 60.00 | 12.70000 | 11.00000 | 20 | 5 |
| XS | 40.00 | 38.00 | 60.00 | 13.50000 | 11.80000 | 20 | 5 |
| S | 40.00 | 40.00 | 60.00 | 14.20000 | 12.40000 | 20 | 5 |
| M | 40.00 | 40.00 | 60.00 | 14.80000 | 13.00000 | 20 | 5 |
| L | 40.00 | 43.00 | 60.00 | 15.80000 | 14.00000 | 20 | 5 |
| XL | 40.00 | 43.00 | 60.00 | 16.20000 | 14.50000 | 20 | 5 |
| XXL | 40.00 | 45.00 | 60.00 | 17.50000 | 15.70000 | 20 | 5 |
| 3XL | 40.00 | 45.00 | 60.00 | 18.30000 | 16.50000 | 20 | 5 |
| 4XL | 40.00 | 47.00 | 60.00 | 18.80000 | 17.10000 | 20 | 5 |